

My priority:

Protect vulnerable people from circumstances that they cannot control.

“Vulnerable people” means:

- Children
- Disabled / elderly
- Victims of domestic violence
- People who could become homeless

“Cannot control” means:

- No fault evictions

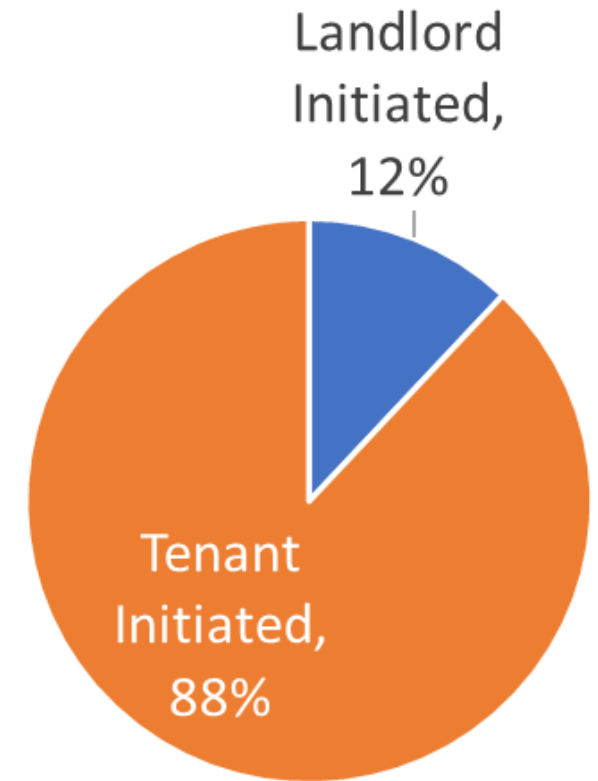
# No fault evictions are a small percentage of cases.

10%-14% of no fault notice to vacates (NTV) were initiated by landlords.

There are two reasons for landlords to issue a no fault NTV:

- Selling the house
- Moving in a family member

All property management stakeholders were concerned that Prop 19 was going to increase the number of landlords trying to sell rentals.



# Prop 19 is a real risk.

Sponsored by:

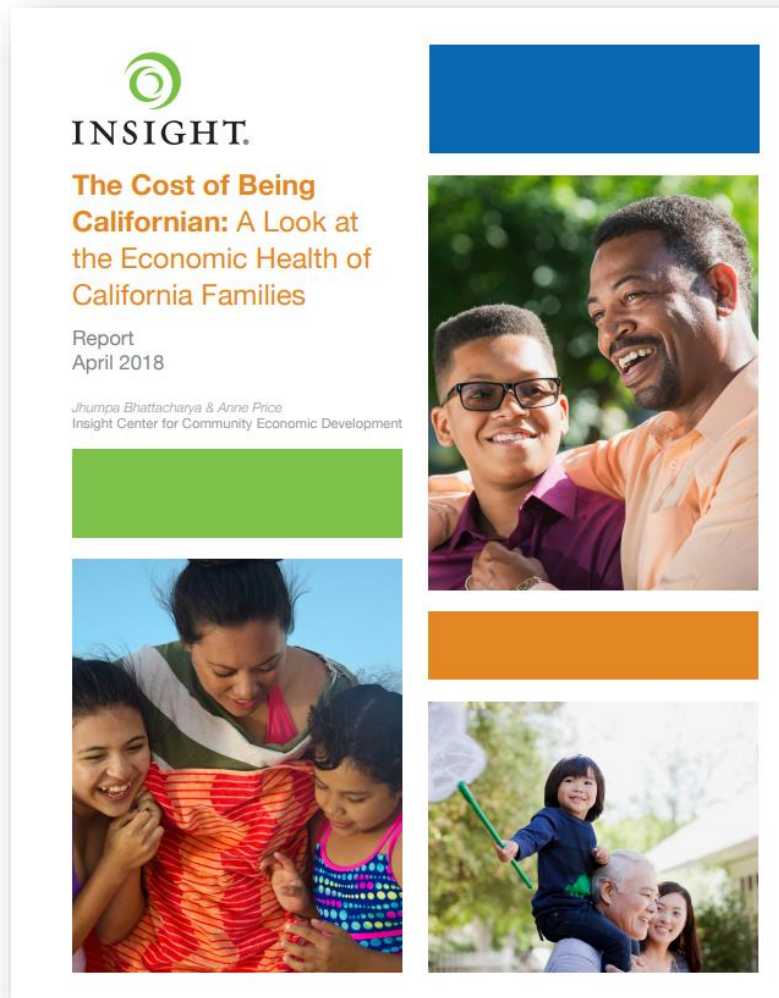


If an inherited home is not used as a personal residence within one year, it is to be reassessed at market value.

If Prop 19 causes sales of rental units to increase, renters will be the most vulnerable population to this situation.

This is not a situation that the Petaluma city council created, but it is something that I am very concerned about.

# Who is at risk?



3.3 million California households are living paycheck-to-paycheck.

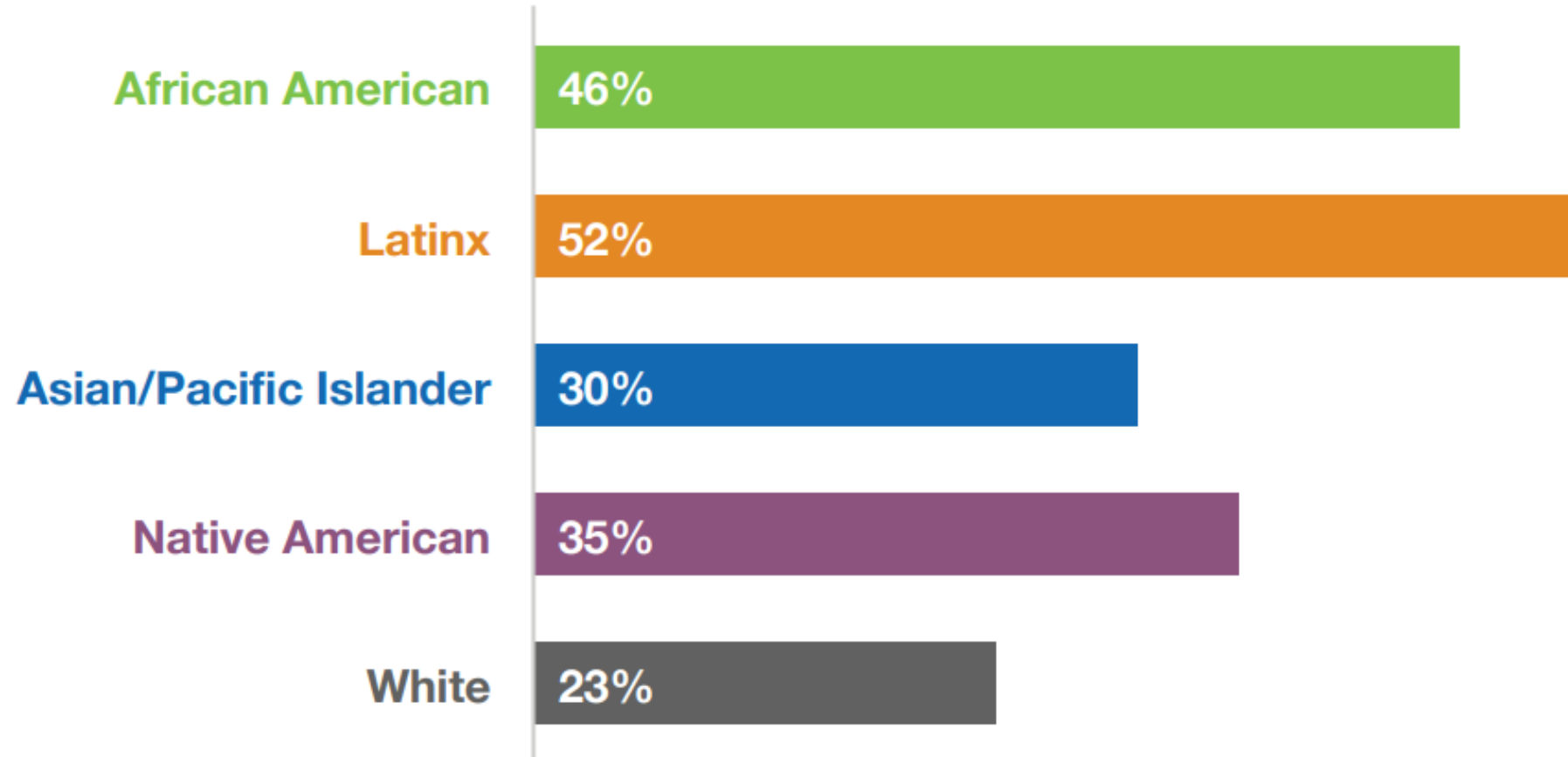
The **Self-Sufficiency Standard** is a “bare bones” budget that takes into account families of various sizes.

It is representative of the actual costs of living.

It includes housing, childcare, groceries, healthcare, transportation, some miscellaneous items (clothing, shoes, diapers, nonprescription medicines, cleaning products, household items, personal hygiene items, and telephone service) and taxes. It does not include a vacation, take-out food, loan payments, or taking a ride service.

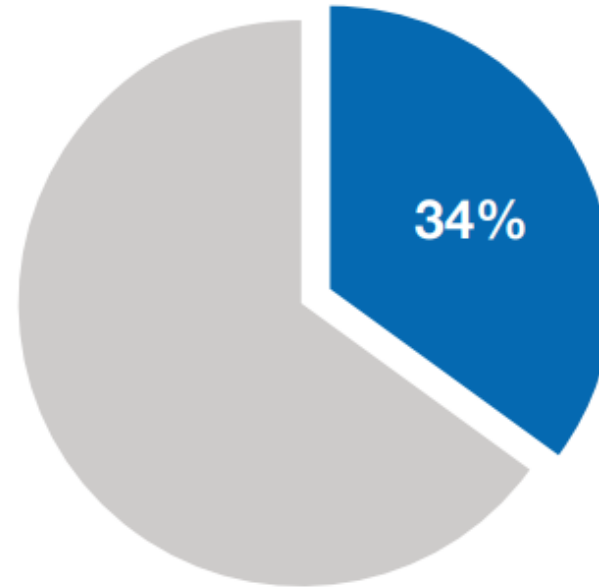
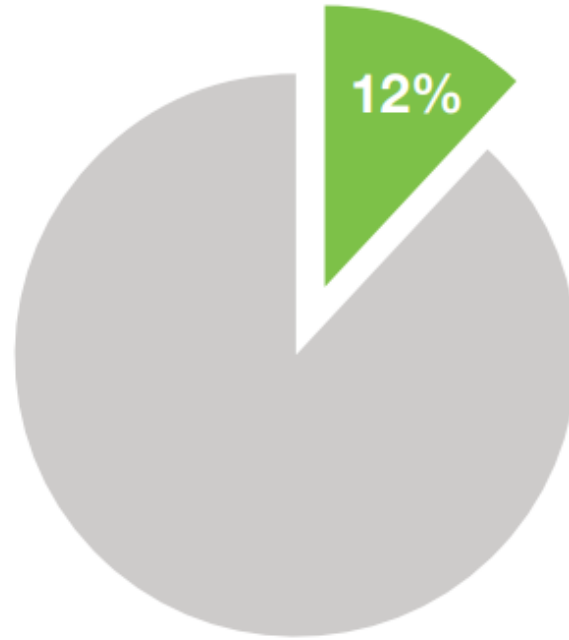
# Who is at risk?

Percentage of households that fall below the standard by race.



# Who is at risk?

**of white  
households**  
with two or  
more workers  
fall below the  
standard



**of households  
headed by a  
person of  
color** with  
two or more  
workers fall  
below the  
standard

# Who is at risk?

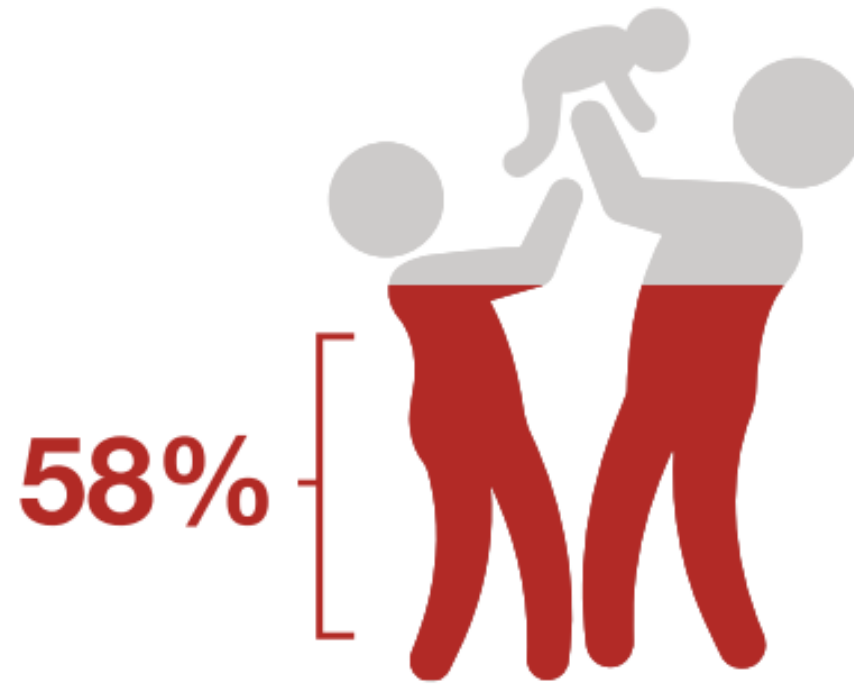
## WOMEN

47% of single female householders fall below standard, compared to 34% of single male householders.

Single Latina households (63%) struggle the most to make ends meet, followed by single African American women (56%).

71% of single moms with one or more children fall below standard, compared to 57% of single dads.

# Who is at risk?



**OF HOUSEHOLDS WITH  
CHILDREN UNDER THE  
AGE OF 6 CANNOT MEET  
THEIR BASIC NEEDS**



A right to recall does not ensure someone does not end up on the street....

Money might.

It costs about 2.5 times the monthly rent to move into a new home.

|                      | Monthly Rent |       | Deposit |       | Move In Cost |       | Months of Rent |
|----------------------|--------------|-------|---------|-------|--------------|-------|----------------|
| 3/2 in West Petaluma | \$           | 3,700 | \$      | 4,700 | \$           | 8,400 | 2.27           |
| 2/1 near Downtown    | \$           | 2,650 | \$      | 3,600 | \$           | 6,250 | 2.36           |
| 3/2 in East Petaluma | \$           | 2,950 | \$      | 4,500 | \$           | 7,450 | 2.53           |
| Studio near DT       | \$           | 1,300 | \$      | 2,100 | \$           | 3,400 | 2.62           |